

AIR-MECH LTD

AIR TOOLS & ACCESSORIES

Sales, Service, Hire & Compressed Air Safety Specialist



Hire Tools Catalogue 2024



Air Hoists - Hire

Atlas Copco Air Hoists are the industry benchmark for fast, precise and reliable lifting of heavy loads. Used for lifting equipment safely: engines, steel girders and beams also for pulling and holding loads. Compact and lightweight they are easy to control, survive rough handling and provide heavyweight performance.

LLA250 Air Hoist (Chain)

Max Lifting Capacity: 250 KG

Lifting Speed at Full Load: 18.6 m/min

Weight excl. Chain: 12.7 KG

Air Consumption: 37 l/s (78 cfm)

Daily Hire Rate	Weekly Hire Rate	Monthly Hire Rate
\$ 100.00	\$ 400.00	\$ 750.00

Note: Hire rates exclude gst and freight.

LLA500 Air Hoist (Chain)

Max Lifting Capacity: 500 KG

Lifting Speed at Full Load: 12.6 m/min

Weight excl. Chain: 12.7 KG

Air Consumption: 38 l/s (81 cfm)

Daily Hire Rate	Weekly Hire Rate	Monthly Hire Rate
\$ 100.00	\$ 400.00	\$750.00

Note: Hire rates exclude gst and freight.



Air Compressors - Hire

1.5HP 50L Oil-Free Air Compressor with Filter Regulator

Featuring a oil free direct drive pump and induction motor for efficient operation.

This oil-free air compressor works very quietly, making it suitable for applications that require quiet working environment. The compressor has a dynamic balance design with rubber cushioned rubber feet to limit its vibration to low level. There is no lubricating oil in the piston and cylinder creating pure air quality.

Specifications:

Type: Single Phase Oil-Free/Silent

Motor Size: 1.5 hp (1 kW)

Tank Sizes: 50 Litre

Pump Displacement: 147 L/min (5 CFM)

Maximum Pressure: 8 bar

Dimensions: 830 x 450 x 450 MM (L x H x W)

Key Benefits :

- Oil-free minimize risks of oil-spilling
- Super quiet
- Reliable & easy to use
- Complete with water trap and regulator



Daily Hire	Weekly Hire	Monthly Hire
\$ 30.00	\$ 125.00	P.O.A

Air Force 2.0 Kw Air Compressor

2.67HP, 230 Volt, 60 Litre Tank

- Oil lubricated belt drive 2.67HP pump and motor
- Horizontal 60 litre tank
- Maximum pressure 125psi
- Free Air Delivery 10 CFM (approx.)
- Air regulator with water trap
- Compressor weight: 60kg



Daily Hire	Weekly Hire	Monthly Hire
\$ 30.00	\$ 125.00	P.O.A

Air Tools Hire - Staplers

92 Series Stapler (18 gauge)

Delfast 92 Series stapler is the number one choice for stapling thin line flooring and cabinet work.

Crown Width: 8.5 mm

Fastener Type: 18 Ga (M Series)

Staple Range: 12 mm – 25 mm



Daily Hire Rate	Weekly Hire Rate	Monthly Hire Rate
\$ 20.00	\$ 80.00	\$ 250.00

Note: Hire rates exclude gst and freight.

Senco SC2 Corrugated Fastener Gun

Powerful Tool ensures complete drive into hard substrates

- Eliminates gluing, milling, doweling, screwing and clamping
- Added strength for larger butt joints

Fastener Width: 25 mm (1")

Fastener Type: 25 Ga Corrugated Fasteners

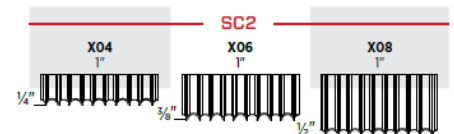
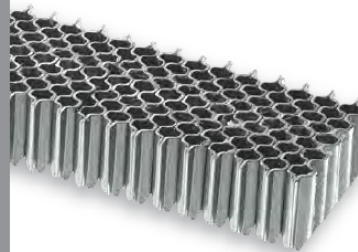
Fastener Range: 6.5 mm - 12.7 mm



Daily Hire Rate	Weekly Hire Rate	Monthly Hire Rate
\$ 30.00	\$ 100.00	\$ 250.00

SENCOR[®] CORRUGATED FASTENERS

Sencor corrugated fasteners provide twice the joint strength of ordinary fasteners. Available in 1" crown and ¼", ⅜" and ½" lengths to ensure maximum joint strength. Use this fastener for butt and miter joints, truss construction, wooden boxes, pallet repair, cabinet and furniture frames.



Air Tools Hire – Staplers

90 / L Series Stapler (18 gauge)

Fastener Type: 18 Ga (L series, 90 series)

Fastener Range: 10 mm - 38 mm

Operating Pressure: 80 – 120 PSI

Tool Weight: 2 kgs

Tool Length: 294 mm

Daily Hire Rate	Weekly Hire Rate	Monthly Hire Rate
\$ 20.00	\$ 80.00	P.O.A



Note: Hire rates exclude gst and freight.

Delfast 92-40 Series Stapler (18 gauge)

Heavy duty air stapler commonly used for aluminium joinery (window and door reveals), bee boxes, frames & cabinet making. Ideal for use on hardwood.

Fastener Type: 18 Ga (92 Series, Bostitch SL5035)

Fastener Range: 12 – 40 mm

Trigger Type: Bump fire trigger

Operating Pressure: 80 - 120 PSI

Tool Weight: 1.9 kgs

Tool Length: 310 mm

Daily Hire Rate	Weekly Hire Rate	Monthly Hire Rate
\$ 20.00	\$ 80.00	P.O.A



Note: Hire rates exclude gst and freight.

SENCO SKS-N Stapler (16 gauge)

Crown Width: 11 mm

Fastener Type: 16 Ga (N Series, 155 Series)

Fastener Range: 16mm - 38 mm

Daily Hire Rate	Weekly Hire Rate	Monthly Hire Rate
\$ 20.00	\$ 80.00	P.O.A



Note: Hire rates exclude gst and freight.

Air Tools Hire – Floor Staplers

Bostitch Secret Flooring Stapler - MIIIFS

The BOSTITCH secret flooring stapler is ergonomically designed for ease-of-use. Pneumatic power drives floor fasteners into the wood surface quickly and efficiently. Suitable for installation of solid and engineered hardwood flooring.

Fastener Type: 15 Ga & 16 Ga (Bostitch BCS1512 & BCS1514)

Fastener Range: 32 mm - 50 mm

Firing Mode: Mallet

Driving Power: 420

Operating Pressure: 70 – 100 PSI

Tool Weight: 5.08 kgs

Tool Length: 438 mm

Hire Includes: MIIIFS Stapler, Graphite Mallet, Flooring Adapter Foot.

Daily Hire Rate	Weekly Hire Rate	Monthly Hire Rate
\$ 30.00	\$ 120.00	P.O.A

Note: Hire rates exclude gst and freight.



Campbell Hausfeld 2-in-1 Flooring Nailer and Stapler kit

The 2-in-1 design gives you the power of two tools in one, reducing the bulky extra pieces or the need to buy/hire two separate tools, heavy-duty and great for hardwood installations

Fastener Type: S4 Series (BCS1512/ BCS1514/ FLN150/ FLN200)

Fastener Range: 38 mm - 50 mm

Firing Mode: Mallet

Operating Pressure: 70 – 90 PSI

Tool Weight: 4.7 kgs

Hire Includes: Campbell Hasusfeld Stapler/ Nailer Tool, Mallet, Guide Plate, Carry Case.

Daily Hire Rate	Weekly Hire Rate	Monthly Hire Rate
\$ 30.00	\$ 150.00	\$ 400.00

Note: Hire rates exclude gst and freight.



Air Tools Hire – Nail Guns

Bostitch N75C-1 Angled Coil Nailer

Perfect for high-volume nailing of wall and roof sheathing. Ideal for high volume nailing, lightweight and quickly adjusts nail depth.

Fastener Type: 15° Coil Sliding

Fastener Range: 38 mm – 75 mm

Firing Mode: Sequential with contact trigger

Magazine Capacity: 300

Operating Pressure: 70 – 120 PSI

Tool Weight: 2.2 kgs

Tool Length: 261 mm



Daily Hire Rate	Weekly Hire Rate	Monthly Hire Rate
\$ 20.00	\$ 80.00	P.O.A

Note: Hire rates exclude gst and freight.

Air Tools Hire – EDICON Tools

EDICON ERD9S Rotary Hammer Drill

All our Rotary hammers are from forged alloy steel body parts, very durable and made for heavy-duty work. Tool can be used as a light chipper or drill. SDS chuck adaptor available.

Frequency: 3400 BPM

Chisel Shank: 19 x 95 mm round

Max Drilling depth: 450 mm

Max drill diameter: 32mm

Stroke: 25 mm

Air Consumption: 570 L/sec

Tool Length: 381 mm

Tool Weight: 5.2 kgs

NOTE: Integral drill bits hired separately



Daily Hire Rate	Weekly Hire Rate	Monthly Hire Rate
\$ 50.00	\$ 200.00	P.O.A
Supplied with whip hose and CEJN 315 Connection Nipple		

Note: Hire rates exclude gst and freight.

Air Tools Hire – Chipping Hammers

PRO P2539-H Extended Goose Neck Chipping Hammer

The P2539 PRO Chipping Hammer is powerful and durable. With a comfortable grip and controllable impact, Pistol grip chipping hammers are well suited for chipping, cutting, shearing and punching applications. The P2539 can easily be adapted for riveting by mounting the rivet snap accessories.

Chisel Shank: 17.5 mm

Blows: 28 Hz

Stroke: 102 mm

Air Consumption: 10.8 L/sec

Tool Length: 425 mm

Tool Weight: 6.8 kgs



Daily Hire Rate	Weekly Hire Rate	Monthly Hire Rate
\$ 50.00	\$ 200.00	P.O.A
Supplied with B Type Claw, 3/8 BSP Hydraulic Nipple and 1 Flat Chisel.		

Air Tools Hire – Impact Wrenches

PRO W2226C – 1" Impact Wrench

Square Drive, Twin Hammer, 1300 Nm Max Forward

Bolt Size: M30

Max Torque: 1,300 Nm

Free Speed: 3,800 r/min

Air Consumption: 18 L/sec

Tool Length: 270 mm

Tool Weight: 6.8 kgs



Daily Hire Rate	Weekly Hire Rate	Monthly Hire Rate
\$ 30.00	\$ 210.00	P.O.A

Air Saw - Hire

FEIN STS325R – Reciprocating Saw Tool

Pneumatic hacksaw for cutting pipes and profiled sections, suitable for cutting pipes and profiles made of steel, cast iron, autoclaved aerated concrete, and plastics.

Clamp and feed device available for profiles and pipes from Ø 3-1/8 in to Ø 24 in.

Strokes: 330 RPM

Air Consumption: 51.2 CFM

Operating Pressure: 87 PSI

Tool Weight: 7 kgs

Tool Length: 291 mm



Daily Hire Rate	Weekly Hire Rate	Monthly Hire Rate
\$ 85.00	\$ 320.00	P.O.A
Blades to be purchased separately.		

BLADE DETAILS	
Part Number	Description
50-63503066002	Fein 200mm x 1.5mm x 16TPI HSS Saw Blade
50-63503063007	Fein 300mm x 1.5mm x 16TPI HSS Saw Blade
50-63503064005	Fein 400mm x 1.5mm x 16TPI HSS Saw Blade
50-63503072002	Fein 500mm x 2.0mm x 14TPI HSS Saw Blade
50-63503073006	Fein 600mm x 2.0mm x 14TPI HSS Saw Blade

FEIN Clamp – Clamping Fixture

For pipes from Ø 100 mm up to 325 mm for straight cuts only, used with the FEIN STS325R



Daily Hire Rate	Weekly Hire Rate	Monthly Hire Rate
\$ 15.00	\$ 75.00	P.O.A

Air Tools Hire - Rivet Nut

F10 - Air Rivet Nut Tool

Rivtec® F10 is a lightweight cost-effective air rivet nut tool installs rivet nuts up to **M10 in all materials**.

It is suitable for both production and project-based installations. It is supplied in a padded plastic carry case including two sets of nose assemblies.

- Standard cap screw mandrel
- Fast setting cycle with single trigger action for setting and spin-off
- Hydraulic oil top up plug
- Spring balance attachment for fatigue free operation
- Quick and easy stroke adjustment
- Supplied in a lightweight padded carry cases

Operating Air Pressure: 90 PSI

Pulling Force: 20, 10 Nm

Stroke: 6.5mm

Tool Length: 269 mm

Tool Weight: 2.1 kgs



Daily Hire Rate	Weekly Hire Rate	Monthly Hire Rate
\$ 80.00	\$ 300.00	P.O.A

Note: Hire rates exclude gst and freight.

Air Tools - Riveters

Powerdyne – ARG-316 Riveter

The ARG-316 is designed to operate faster and more powerful than the manual or electric models. It can accept blind aluminium rivets up to 4.8 mm

Rivet capacity: 2.4, 3.2, 4.0 4.8mm

Operating Pressure: 90 PSI

Tool Weight: 1.5 kgs

Tool Length: 291 mm

Daily Hire Rate	Weekly Hire Rate	Monthly Hire Rate
\$ 20.00	\$ 80.00	P.O.A

Note: Hire rates exclude gst and freight.



Air Tools Hire - Sanders

Random Orbital Sander (IADA-6M)

Industrial quality finishing sander, equipped with built-in silencer, no vacuum system.

Sanding Pad Size: 150 mm

Max Free Speed: 10,000 RPM

Orbital Stroke: 4.8 mm

Spindle Size: 5/16" – 24 UNF

Operating Air Pressure: 90 PSI

Average Air Consumption: 5 CFM

Air Inlet Size: 1/4" BSP

Tool Weight: 1.24 KG



Daily Hire Rate	Weekly Hire Rate
\$ 10.00	\$ 40.00

Note: Hire rates exclude gst and freight.

Orbital Air Sander (AT-300J)

Compact palm-grip for one handed operation. Built in regulator for positive speed control. Heavy-duty balanced ball bearing construction for smooth operation. Minimal vibration during use, muffled rear exhaust.

Max Free Speed: 8,000 RPM

Sanding Pad Size: 90 x 170 mm

Orbital Stroke: 4.8 mm

Operating Air Pressure: 90 PSI

Average Air Consumption: 6 CFM

Air Inlet Size: 1/4" BSP

Tool Weight: 1.95 KG



Daily Hire Rate	Weekly Hire Rate
\$ 10.00	\$ 40.00

Note: Hire rates exclude gst and freight.

Air Tools Hire - Drills

Powerdyne 3/8" Non-Reversible Drill (AD-389KL)

Fitted with a Jacobs keyless chuck, silencer and cushion handle.

Free Speed: 2500 RPM

Chuck Capacity: 3/8" (10mm)

Spindle Thread: 3/8" - 24

Operating Air Pressure: 90 PSI

Average Air Consumption: 4 CFM

Air Inlet Size: 1/4"

Tool Weight: 1 KG

Tool Length: 170 mm



Daily Hire Rate	Weekly Hire Rate
\$ 10.00	\$ 40.00

Note: Hire rates exclude gst and freight.

Bosch Rotary Hammer Drill

Ideal for drilling even in wet, damp locations and shafts, in all those places where electrical rotary hammers are not permitted.

- SDS-plus system for no-loss power transmission and fast tool changes with simple insertion and release
- Overload clutch
- Auxiliary handle with adjustable depth stop can be rotated 360°
- Also suitable for left-handers

Full Load Speed: 850 RPM

Impact Rate: 3900 RPM

Air Consumption: 35 CFM

Tool Weight: 2.7 kgs

Drilling - Concrete: 20 mm

Drilling - Steel: 13 mm

Drilling - Wood: 30 mm



Daily Hire Rate	Weekly Hire Rate
\$ 60.00	\$ 300.00

Air Tools Hire - Scabblers

MS-30L Triple head compact scaler/scabber

Designed for heavy-duty work such as scaling bridges, ship decks and hulls, railroad cars, structural steel pipe, and roughing concrete.

Blows per minute: 7000

Air Consumption: 550L/min (19.4 CFM)

Tool Length: 332mm

Air inlet thread: 3/8

Tool Weight: 3.8 KG



Daily Hire Rate	Weekly Hire Rate	Monthly Hire Rate
\$55.00	\$275.00	P.O.A
Supplied with A Type Claw		

Note: Hire rates exclude gst and freight.

NB-10A Stone Scraper

The stone scraper is the most suitable for surfacing concrete and stone.

Blows per minute: 2500

Air Consumption: 350L/min (12.4 CFM)

Tool Length: 210mm

Air inlet thread: 3/8

Tool Weight: 10 KG



Daily Hire Rate	Weekly Hire Rate
\$55.00	\$ 275.00

Note: Hire rates exclude gst and freight.

Air Tools Hire – Scabblers/Scalers

EDICON SCH3SC - Triple Headed Scabbler

Scabblers are ideal tools for cleaning and roughening concrete and construction joints

Frequency: 3200 BPM

Hose Size: 10mm

Operating Air Pressure: 90 PSI

Average Air Consumption: 270 L/min

Tool Weight: 4 KG

Tool Length: 481 mm



Daily Hire Rate	Weekly Hire Rate
\$55.00	\$ 275.00

Note: Hire rates exclude gst and freight.

Air Tools Hire – Needle Scalers

PRO P2540 – Pistol Grip Needle Scaler

PRO Needlescalers are perfect for tough applications involving removal of weld flux or paint and rust. The incredibly low vibration levels of these tools enable operators to run them safely for long periods, without loss of efficiency. Light and compact, the all-steel construction of the tools ensures durability.

Blows: 40 Hz

Stroke: 11 mm

Air Consumption: 8 L/sec

Max Working Pressure: 90 PSI

Tool Length: 340 mm

Tool Weight: 2.7 kgs



Daily Hire Rate	Weekly Hire Rate	Monthly Hire Rate
\$ 45.00	\$ 125.00	P.O.A
Supplied with whip air-hose & needle scaler attachment.		

Note: Hire rates exclude gst and freight.

Air Tools Hire – Pneumatic Breakers

Atlas-Copco TEX 190PE

Light and medium sized breakers for service jobs and general demolition in soft and medium hard materials

Impact rate: 1500 BPM

Operating Air Pressure: 90 PSI

Average Air Consumption: 26 L/s

Shank Size: 28 x 160

Tool Weight: 23 KG

Tool Length: 645 mm



Daily Hire Rate	Weekly Hire Rate
\$ 55.00	\$350.00

Note: Hire rates exclude gst and freight.

Filter Stands - Hire

Atlas Copco – Small Filter stand

The MIDI optimizer is suitable for more than 90% of Atlas Copco tool range and is the best choice for assembly tools, percussive tools, drills, nibblers and grinders up to turbo. The MIDI optimizer has a 1/2" ports, allow s dry and lubricated air outlet connections

Inlet - A type claw

Outlets – Dry A type claw and 315 cejn

Lubricated – A type claw and 2x 315 cejn

Max Air Flow: 55 L/sec

Max Working Pressure: 90 PSI

Working Temperature: -40 to+60 at 10 bar

Spindle Thread: 3/8-24 UNF

Tool Weight: 1.5 kgs



Daily Hire Rate	Weekly Hire Rate	Monthly Hire Rate
\$ 50.00	\$ 210.00	P.O.A
Supplied with B Type Claw and 3/8 BSP Hydraulic Nipple.		

Hoses - Hire

Air Hoses

This hose offers an extensive hose range with several different styles of polyurethane (PUR) hoses. The material of PUR offers a high rate of flow and exceptional resistance to oils, solvents and other non-aqueous solutions. The hoses have excellent recoil ability and are extremely flexible and remain flexible after extensive use.

Hose diameters (ID): 10mm, 13mm, 16mm, 19mm, 25mm

lengths: Various

Max pressure: 200 PSI



Daily Hire Rate	Weekly Hire Rate	Monthly Hire Rate
From \$10 a day	P.O.A	P.O.A

Inline Lubricator

These heavy-duty in-line lubricators are installed 2 to 3 meters from the tool and will provide maximum protection. We recommend these differential flow type for use on tools with intermittent running such as chipping hammers, impact wrenches etc. , for tools which run for longer periods without stopping and starting such as rock drills use our constant flow type lubricators.

Max Air Flow: 316 L/sec

Max Working Pressure: 90 PSI

Working Temperature: -10 to+50 at 10 bar

Inlet pressure: 0-17.5 bar

Outlet pressure: 0.5-12 bar

Connection fittings: A and B claw type



Air Tools Hire

Atlas Copco – 10” Circular Saw

The 10” Circular saw is well made, and ready for the workspace, designed to cut through wood etc....the cutting depth is adjustable between 10mm (0.39 in.) and 88mm (3.86 in.) at a sawing angle of 45°, the cutting depth can be between 2 mm (0.08 in.) and 80mm (3.15 in.), The motor should be lubricated with oil, the motor can also be lubricated from a built-in oil chamber in the throttle handle.

Max Permissible Speed: 5300 r/min

Air Consumption: 40 L/sec (85 CFM)

Max Working Pressure: 87-102 PSI

Tool Weight: 8.5 kgs (Without Blade)



Daily Hire Rate	Weekly Hire Rate	Monthly Hire Rate
\$ 50.00	\$ 250.00	P.O.A

Atlas Copco – RAB 9 VR006 Screw Feed Drill

The RAB series of powerful screw feed drills is capable of producing holes of up to 23mm

Free Speed: 600 rpm (for forward and reverse)

Morse Taper: 2

Hose size: 1/2

Max Working Pressure: 85-103 PSI

Capacity Drilling: 23mm

Tool Height: 265mm

Tool Weight: 9.5 kgs



Daily Hire Rate	Weekly Hire Rate	Monthly Hire Rate
\$ 85.00	\$ 320.00	P.O.A

Blades to be purchased separately.

Air Tools - Grinders

Atlas Copco - PRO G2409 Angle Grinder

When it comes to high quality finishing and general surface preparation PRO grinders are the preferred choice. The G2409 PRO Angle Grinder features a lightweight housing with a comfortable rubber grip. The grinder delivers all the power you need while being easy to handle. The unit can easily be taken and used anywhere. The job is done faster with this small, yet powerful tool. Available in several wheel diameter sizes.

Free Speed: 12000 rpm

Wheel Diameter: Ø 125 mm

Max Output: 650 kW

Air Consumption: 15 L/sec

Max Working Pressure: 90 PSI

Spindle Thread: 3/8-24 UNF

Tool Weight: 1.5 kgs



Daily Hire Rate	Weekly Hire Rate	Monthly Hire Rate
\$ 50.00	\$ 210.00	P.O.A
Supplied with B Type Claw and 3/8 BSP Hydraulic Nipple.		

Atlas Copco – PRO G2416 Vertical Grinder

The vertical grinder are a popular choice for surface preparation in general industry. They are lightweight tools that deliver all the power you need, yet easy to handle. For additional comfort they are equipped with a rubber handle grip and adjustable wheel guard. All grinders except the G2416-series are equipped with a speed governor to ensure the grinding wheel operates at optimum speed.

Free Speed: 6000 rpm

Wheel Diameter: 180 mm

Air Consumption: 21 L/sec

Max Working Pressure: 90 PSI

Spindle Thread: 5/8-11 UNC

Tool Weight: 2.65 kgs



Daily Hire Rate	Weekly Hire Rate	Monthly Hire Rate
\$ 85.00	\$ 320.00	P.O.A
Blades to be purchased separately.		

Equipment on Hire

Please be aware of your obligations as detailed below.

- **TOOL LUBRICATION:**

Small / Medium Tools:

Please ensure the tool is lubricated, 5-10 drops of air tool oil into the air inlet every day.

Large Tools (Rock drills/Breakers etc)

Use with the inline lubricator and refill with oil daily.

Tools with automatic internal/built in oilers:

Check and refill reservoir with oil daily

- Please ensure the air supply to the tool is filtered and regulated.
- Please ensure the correct air pressure is used
6-7 bar (90psi-102psi) for most air tools. Some nailguns can operate upto 120psi, check tool manual to confirm.
- Please return this tooling in the original packaging with all supplied accessories and documentation (Handles, parts lists, etc)
- Failure to follow these instructions could result in damage caused by:
 - Excessive air pressure
 - Moisture in the air supply
 - Insufficient lubrication.You will be liable for costs incurred to repair any damage to the tool.
- You are responsible to arrange and pay for the return freight.
- If you have any questions about the tooling, please call us on 0800 247 6324

AIR-MECH LIMITED'S CONDITIONS OF HIRE:

1. Delivery and Removal of Equipment

The Hirer authorises the Owner to bring its vehicle onto his/her property to deliver and to recover the equipment at the end of hire. The Owner shall not be responsible to the Hirer nor third parties for any damage that may be done to driveways or underground services by any reason of the weight of the vehicle. Requests for collection must be made by telephone when the Hirer has finished with the equipment and not by prior arrangement. All cartage charges are to be paid by the Hirer. Equipment must be packed up, ready for loading, and assistance rendered to the Owner's driver if more than one person is required to load it. The Hirer is still responsible for the equipment until collected from site.

2. Hire Period

Hiring commences at the time shown on the face of this form which is the time the equipment leaves the Owner's store. The hiring shall terminate at the time stated by the Hirer on the face of this form. By that time the equipment is to be delivered back to the Owner's store either by the Hirer, carrier or following collection by the Owner's vehicle at the Hirer's request.

3. (a) Owner's Right to Hire

The Owner may terminate the hire at any time without reason by giving the Hirer 48 hour's written notice. Such notice may be given either by personal delivery or by post to either the job address or any other address of the Hirer specified on the face of this agreement. In the case of notices posted to the Hirer the period of notice shall commence to run from the time at which the notice would have been delivered in the ordinary course of the post. The Owner shall not be responsible to the Hirer for any loss arising as a result of such termination.

(b)

Notwithstanding termination of the hiring the Hirer shall be obliged to pay the Owner a sum equivalent to hire fees at the rate specified herein in respect of any period from the date of termination of the hiring until the equipment is actually returned to the Owner's store.

4. Hiring Charges

In the absence of any special arrangements to the contrary, equipment is hired on a daily rate, Saturday, Sunday and holidays included. Minimum rates apply when"

- i) the term of the hire is not greater than 4 hours during our normal business hours, or
- ii) the term of the hire is overnight between the hours of 4pm to 8am Monday to Friday – shift work included.

A day is 8 hours, a half-day is 4 hours (or overnight between 4pm and 8am) and one week is 7 days.

The hire period is based on the time the equipment is uplifted until the time the equipment is returned or advised for pick up, not the time for which the equipment is used.

5. Payment

- (a) Unless the Hirer operates a credit account with the Owner, a bond is required before hiring commences which will exceed the estimated total charges and an appropriate refund will be made to the Hirer on return of the equipment in good order and condition. Should total charges exceed the amount of the bond the balance is payable by the Hirer promptly on return.
- (b) The Hirer by accepting the goods or services agrees to the terms and conditions as laid down by the Owner and agrees to pay any costs of collection and all legal fees incurred by the Owner in the event of legal action becoming necessary.
- (c) Where the Hirer operates a credit account with the Owner, payment is due on the twentieth day of the month after the date of invoice. Where payment is not made by the due date, the Owner reserves the right to charge default interest at the rate of 2.5% (+ GST) above the Owner's overdraft rate as it may apply.
- (d) No claim for credit will be recognised after one month of the date of invoice.

6. Care of Equipment and Breakdown

- (a) The Hirer shall take proper care of the equipment. In the event of the equipment being damaged, the Hirer shall pay to the Owner a sum equivalent to the cost of making good said damage. In the event of the equipment being lost on hire to the Hirer, then the Hirer shall pay to the Owner a sum equivalent to the cost of replacing the equipment as lost.
- (b) The Hirer warrants that he is competent and qualified to use the equipment in the way or which it is designed.
- (c) Breakdown resulting from misuse shall not in any circumstances shorten the period of hire.
- (d) It is the Hirer's responsibility to satisfy himself/herself that the equipment is suitable for the work intended and that it is used in a way that complies with all statutory requirements.
- (e) The equipment does not purport to be new stock or equal to new, but when sent out all items are understood to be in good condition and fit for normal use.
- (f) The Owner is not liable for any loss suffered by the Hirer or liability incurred by the Hirer as a result of the breakdown of equipment, howsoever caused. Notwithstanding the foregoing any liability attaching to the Owner under this agreement shall be limited to the amount of hireage charges due under this agreement. In the event of breakdown the Hirer must immediately notify the Owner by telephone.

7. Injury or Damage to Hirer or Third Persons or Property

The Hirer shall not have any claim against the Owner for loss or damage suffered by the Hirer as a result of the Hirer's use of the equipment and further the Hirer will indemnify the owner against any claim by a third person in respect of any loss, injury or liability arising from this hiring or arising out of the use of the equipment hired by the Hirer.

8. No Assignment of Hire Agreement

This agreement is personal to the Hirer and is not capable of assignment by persons, and the Hirer shall not sublet the equipment to any other person, but this shall not prevent employees of the Hirer using the equipment by the Hirer.

9. No Warranties by Owner

The Owner makes no warranty or representations as to the state, quality or fitness of the equipment for any purpose and no such warranty shall be implied by the description of the equipment on the face of this form. All implied warranties and conditions as to the state, quality or fitness of the equipment for any purpose are hereby excluded.

10. The person signing this document for and on behalf of the Hirer (if not personally the Hirer) warrants that they have the authority of the Hirer to make this contract of the Hirer's behalf and that he is empowered by the Hirer to bind the Hirer to this agreement. The person so signing hereby indemnifies the Owner against all losses and costs that may be incurred by the Owner arising out of the person so signing the agreement failing to have such power of authority.

11. The Hirer shall forthwith on request by the Owner advise the Owner of the whereabouts of the equipment and allow the Owner or its agent or servants reasonable time to inspect and test the equipment and for such purposes the Hirer hereby gives irrevocable leave and licence to the Owner, its servants and agents to take possession of the equipment remove the same and to enter upon any premises where the equipment or any of the same or any part thereof may be.

12. In the case of a person entering into this contract in a private capacity as Hirer, the Hirer by entering into this contract hereby authorises the disclosure of personal information regarding this creditworthiness by any other party to the Owner and that this personal information may be used by the Owner to advise the Hirer of the Owner's other goods and services. The Hirer has rights of access to and correction of personal information contained in this contract subject to the provision of the Privacy Act 1993.

13. Acceptance

Print Name: Date Collected:

Signed By or On Behalf of Hirer Time Collected:

Contact us to check tool availability

ADDRESS	Air-Mech Limited Unit 1, 68 Marsden Bay Drive Marsden Point, Whangarei 0118
POSTAL DETAILS	PO Box 95147 Swanson, Waitakere 0613 New Zealand
PHONE	(09) 837 4649
FREE PHONE	0800 247 6324
E-MAIL	sales@air-mech.co.nz

Business hours

Monday to Thursday

8:30am – 4:30pm

Friday

8:30am – 4:00pm

Saturday & Sunday - Closed