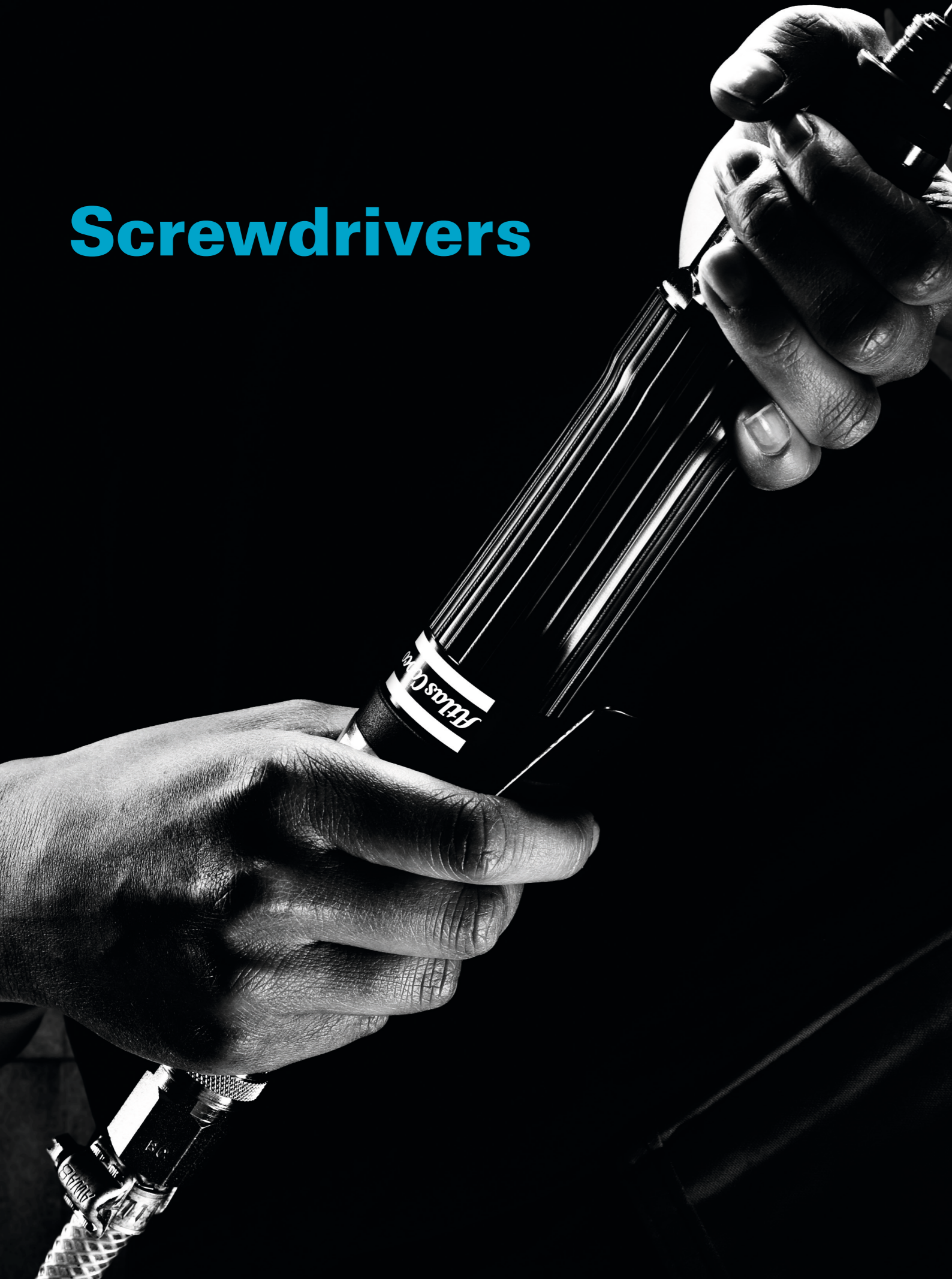


Screwdrivers



Speed and precision!

- Slip-clutch for torque control. Once the desired torque is reached the coupling slips
- Well balanced and ergonomic
- Soft-start trigger for smooth operation
- 360 degree adjustable air exhaust
- Silent



Selection guide

	Machine screw 4.8	Machine screw 8.8	Thread forming screw-M	Thread forming screw-ST	Thread forming screw-ST plastic	Self drilling screw-S	Wood screw
Impact clutch	•	•	•	•		•	•
Direct drive	◇	◇	◇	◇		•	•
Slip clutch	◇	◇	◇	•	◇	•	•
Shut-off clutch	•	•	•	◇	•	◇	

- Recommended
- ◇ Usable

PRO Direct Drive Screwdrivers



S2305

PRO Direct Drive Screwdrivers are suitable for self-drilling and wood screws. The tools are well balanced and quiet. A soft-start trigger ensures smooth operation and the air exhaust is adjustable through 360 degrees.

PRO Impact Drive Screwdrivers are lightweight tools offering a productive blend of operator comfort and exceptional performance. There are two models – both are reversible with a simple flip-off lever on the side of the tool handle.



S2480

Model	Bolt size mm	Quick change chuck in	Torque range Nm	Free speed r/min	Weight kg	Length mm	Air consumption l/s	Rec. hose size mm	Air inlet thread BSP	Ordering No.
Impact drive										
S2480	M5	1/4"	6-13	6500	0.8	132	10	10	1/4"	8431 0257 90
S2481	M6	1/4"	11-20	5000	0.9	143	8	10	1/4"	8431 0257 92
Direct drive										
S2305	M8	1/4"	0-12	750	0.9	198	5.6	8	1/4"	8431 0257 28
S2326	M6	1/4"	0-4.5	2400	0.8	178	5.6	8	1/4"	8431 0257 36

PRO Shut-off Screwdrivers



S2308-C / S2309-C / S2310-C

PRO Shut-off Screwdrivers offer impressively high torque accuracy. Our fast shut-off models deliver smooth performance and high quality tightening. PRO Slip-Clutch Screwdrivers provide an implied pulsating force, or slip, once you reach the desired torque.

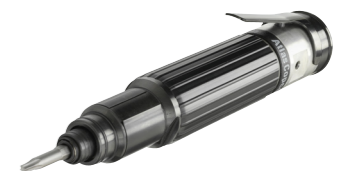
Both versions feature adjustable torque settings, trigger and push start for pistol grips, and lever and push start for straight models.



S2450-P / S2451-P / S2452-P



S2340-C / S2360-C / S2370-C



S2416-L / S2426-L / S2428-L

Model	Screw capacity mm	Quick change chuck in	Torque range Nm	Free speed r/min	Weight kg	Length mm	Air consumption at free speed l/s	Recommended hose size mm	Air inlet thread BSP	Starting method			Ordering No.
										Push	Push and trigger/lever	Trigger/lever	
Slip clutch													
S2308-C	M6	1/4"	2.5-11	950	1.1	225	8.4	10.0	1/4"	-	●	-	8431 0257 20
S2309-C	M5	1/4"	1.5-7.5	1200	1.0	245	7.0	8.0	1/4"	-	●	-	8431 0257 22
S2310-C	M5-8	1/4"	2-15	800	1.1	225	8.5	10.0	1/4"	-	●	-	8431 0257 24
S2307-CE	M6	1/4"	2.5-10	900	1.2	245	8.4	10.0	1/4"	-	-	●	8431 0257 26
S2340-C	M3	1/4"	0.5-2	1300	0.9	250	4.0	6.3	1/4"	-	●	-	8431 0257 40
S2360-C	M4-5	1/4"	1.3-7	700	0.9	260	4.0	6.3	1/4"	-	●	-	8431 0257 60
S2370-C	M5	1/4"	2-6	1300	0.9	250	4.0	6.3	1/4"	-	●	-	8431 0257 70
Shut off													
S2426-L	M4	1/4"	1.2-2.6	1500	0.9	230	6.0	8.0	1/4"	-	●	-	8431 0257 80
S2428-L	M4-5	1/4"	3.5-7	700	1.0	242	6.0	8.0	1/4"	●	-	-	8431 0257 81
S2416-L	M3	1/4"	0.5-1.6	1500	0.9	230	6.0	8.0	1/4"	-	●	-	8431 0257 82
S2450-P	M5	1/4"	2.4-5	1100	1.1	225	6.0	8.0	1/4"	-	-	●	8431 0257 84
S2451-P	M5	1/4"	3.5-7.5	800	1.1	250	7.0	8.0	1/4"	-	●	-	8431 0257 86
S2452-P	M6	1/4"	3.5-12	580	1.1	250	7.0	8.0	1/4"	-	●	-	8431 0257 87

S2307-CE external adjustable clutch